

BUDGET BREAKDOWN

Alliance for Cape Fear Trees

Funding requested:	\$4,200.00	Tree Purchase with shipping cost *
Matching Contributions:	\$7,172.40	<i>See breakdown below</i>
60 volunteers, 2 hours each @21.47 hourly	\$2,576.40	Volunteers participating in planting day
3 City Staff, 4 hours each @22.00 hourly	\$264.00	Tree and mulch delivery, assistance in spreading mulch, and initial watering
City Forestry Supervisor, 15 hours @\$35.08	\$526.20	Oversight of City partnership in project, accepting trees, delivering, teaching tree planting technique, mulch and water application, educational workshop
Mulch and use of shovels	\$800.00	Contribution from City stock for tree planting
7 Alliance Volunteers, 140 hours @21.47 hourly	\$3,005.80	Time spent organizing, planning, communicating, recruiting volunteers, attending workshop, overseeing planting event

* Price estimate from tree lists, Panther Creek Nursery, Willow Spring, NC, and Tinga Nursery, Castle Hayne, NC

PROJECT TIMELINE

Alliance for Cape Fear Trees

July 2019: Notify collaborating organizations of grant award and select a date in October for the tree planting. Saturday, October 19th or 26th, are preferred dates

August 2019: Discuss with NCUFC a plan for the type of education workshop and a date for the event, if separate from planting date.

September 2019: Contact several residents of each neighborhood selected about the dates for planting and workshop, and recruit Tree Keepers for replaced trees.

September 2019: Select and order trees from area nursery for Tree Planting Event, and line up volunteers from collaborating organization for tree planting.

September/October 2019: Work with collaborating organizations to plan for plantings at several different locations, and select a staging area for instructions, education and assignments. This will involve residents and volunteers, as well as other interested community members. Use media contacts. Invite special guests, including Mayor, to tree planting event.

October 2019: Contact 811 for check of underground utilities; gather needed supplies for the planting: water bottles, snacks, shovels, gloves, sign-in sheets, First Aid Kit, etc.; contact media again with date of tree planting event.

October 19 or 26, 2019: Tree Planting Event to be held with demonstration of correct planting technique, tree selection, maintenance and additional educational presentations by City Forestry Supervisor and local tree experts. Trees and mulch will be brought to the site that morning by City staff from the City Nursery where they will be delivered from the source nursery(ies) earlier that week. Following planting and application of mulch, water trees with water trailer.

November 2019 and monthly: Trees checked for water, mulch replacement, and any other maintenance needs by Tree Keepers, Alliance volunteers, and City staff.

December 2019/January 2020: Mid-Year Report submitted to NCUFC with progress on completion of project.

May 2020: Final Report submitted to NCUFC with all requested inclusions.

Anderson Park Stream Buffer Restoration

Trees

Trees will be planted approximately 50ft on center. Similar Species/sizes may be substituted based on availability and condition of stock at local nurseries. Diversity of species will be maintained for substitutions. Planting, pruning, and staking will be done as per current ISA ANSI standards.

Map Color	Common Name	Scientific Name	DBH	Qty	Status
Red	Sugar Maple	Acer saccharum	Various	7	Existing
Yellow	American Elm	Ulmus americana	2.5"	1	Existing
Orange	Tulip Poplar	Liriodendron tulipifera	2.5"	3	To be planted
Purple	Redbud	Cercis canadensis	2.5"	3	To be planted
Pink	Dogwood	Cornus florida	2.5"	3	To be planted
White	Bald cypress	Taxodium distichum	2.5"	3	To be planted
Green	River Birch	Betula nigra	2.5"	2	To be planted
Blue	Water Tupelo	Nyssa aquatica	2.5"	3	To be planted
Brown	Fringetree	Chionanthus virginicus	2.5"	3	To be planted



Information sign & photography station

Live Staking

Live staking will install along the length of the stream. The length of stream is approximately 420 ft. Live stakes are about 3/8" to 1-1/2" diameter and 2 to 3 feet long. The staking will be placed 3ft on center in offset rows on each side of the stream. Stakes will be driven through erosion control fabric to grow roots which will help hold soil in place. We will plant 500 to 600 live stakes. We will choose a mix of species, no less than 3, based on availability at time of planting. A list of possible species is below.

Species	Common Name
Cephalanthus occidentalis	Button bush
Callicarpa americana	American beautyberry
Cornus amomum	Silky dogwood
Physocarpus opulifolius	Ninebark
Salix caroliniana	Carolina willow
Salix nigra	Black willow
Salix sericea	Silky willow
Sambucus canadensis	Elderberry
Symphoricarpos orbiculatus	Coralberry

Seeding

Any seeding required for stabilization will be a native seed mix designated for Riparian Buffer use. It will be applied at a rate of 20-25 lbs per acre. The species mix is outlined below and includes butterfly, bird, and pollinator friendly species.

Species	Common Name	Percent
Agrostis perennans	Autumn bentgrass	15
Andropogon gerardii	Big bluestem	10
Coreopsis lanceolata	Lanceleaf coreopsis	10
Elymus virginicus	Virginia wildrye	20
Juncus effusus	Soft rush	5
Panicum virgatum	Switchgrass	15
Rudbeckia hirta	Blackeyed susan	10
Schizachyrium scoparium	Little bluestem	5
Sorghastrum nutans	Indian grass	5
Tripsacum dactyloides	Eastern gamagrass	5
TOTAL		100

Dawson St.

Bus Stop

Virgil Rhodes Ln.

920

924

928

932

936

utility box

Wright St.

West side

overhead

utilities connect across S. 10th St. not along the right of way.

Tree Species:

- Burr oak
- Blackgum
- Emerald City Tulip

1004

1008

1012

1016

1020

1024

1028

1032

1036

S. 10th St.

Sewer

905

909

913

915

East Side

• overhead utilities along entire street

Tree Species:

- Red bud
- Purple Leaf Plum

1001

1003

1005

1007

1009

1019



Features

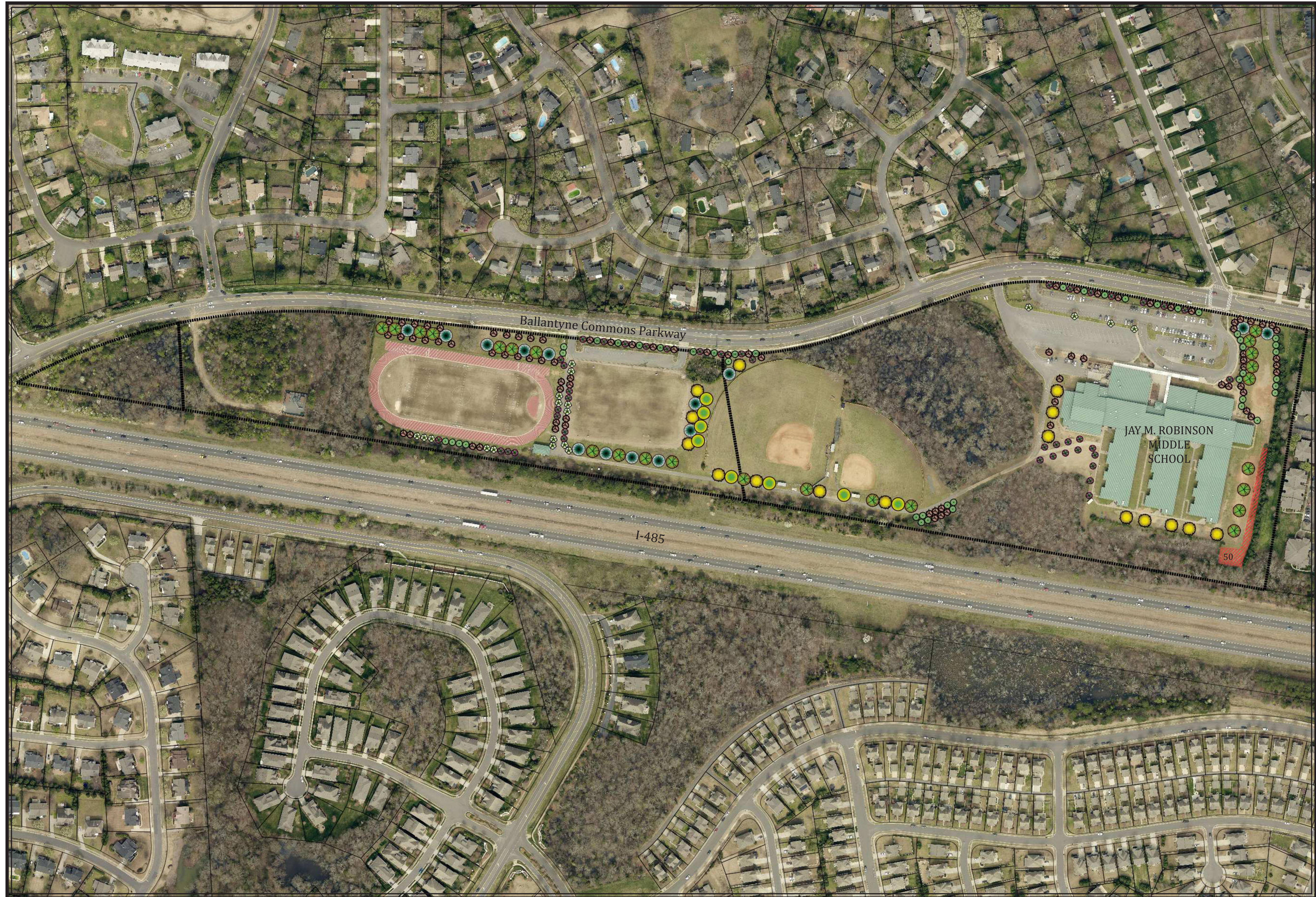
- fire hydrant
- utility/light pole
- street sign
- existing trees/bushes
- storm water drain
- X proposed tree planting

Mearns St.

VICINITY MAP
NTS

**Jay M. Robinson
Middle School
Tree Planting**

Generously Supported by



Reforestation
*Trees will be planted at 15' O/C.
 (50) Mixed Hardwoods
Approx. 0.22 Acres

Large Maturing Trees

- () Oak
- () Magnolia
- () Elm
- () Tulip Poplar

Small Maturing Trees

- () Grape Myrtle

Tree Totals

- () Volunteer Event Planned Trees
7 GALLON
- (50) Event Planned Reforestation Trees
7 GALLON
- () Total Event Trees

SCALE: 1" = 150' *Trees are scaled at maturity.



in Partnership with



Saturday, XXX xth, 2018/19

Jay M. Robinson Middle School

5925 Ballantyne Commons Parkway, Charlotte, NC 28277

Tree Planting Plan

